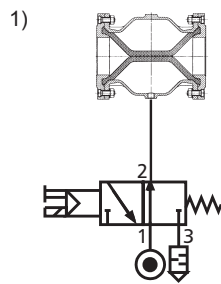
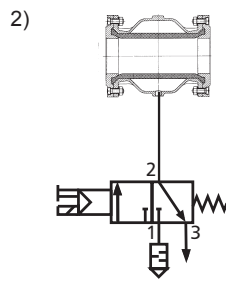


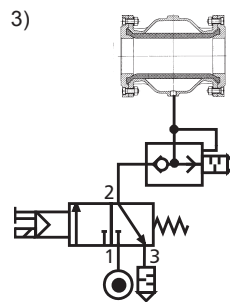
Controlos / Controls



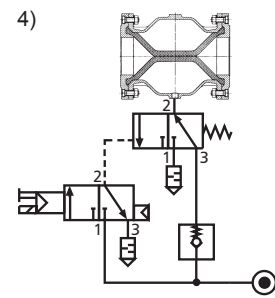
Válvula solenóide de 3/2 vias aberta sem corrente (NO)
3/2-way solenoid valve currentless open (NO)



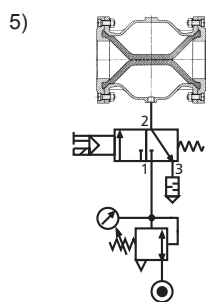
Durante débito de aspiração: bomba de vácuo na ligação 3
Conveying by suction: vacuum-pump at connection 3



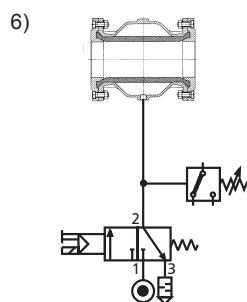
Válvula solenóide de 3/2 vias (NC) com válvula de purga rápida do ar
3/2-way solenoid valve (NC) with quick exhaust valve



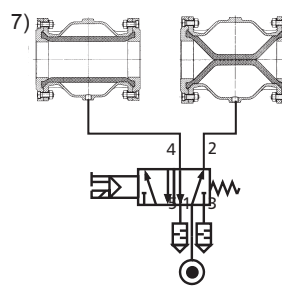
Em caso de falha da pressão/da corrente: Válvula de manga flexível permanece fechada
For pressure power shut down: Pinch valve remains in closed position.



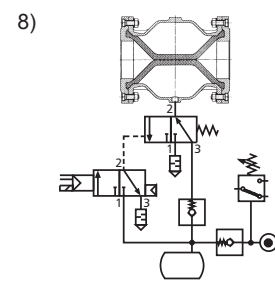
Válvula solenóide de 3/2 vias (NC) normalmente fechada com redutor de pressão
3/2-way solenoid valve (NC) normally closed with pressure regulator



Válvula solenóide de 3/2 vias (NC) com redutor de pressão
3/2-way solenoid valve normally closed (NC) with pressure switch



Válvula solenóide de 5/2 vias com várias regulações
5/2-way solenoid valve for various regulation



Em caso de falha da pressão/da corrente: válvula de manga flexível fecha também em estado aberto (reservatório de ar).
For pressure power shut down: Pinch valve can close in open position (air tank).

Tempos de abertura e de fecho das válvulas de manga flexível Opening and closing times of the Pinch Valve

Diâmetro nominal (mm)	Tempo de abertura (seg.)	Tempo de fecho (seg.)
Diâmetro nominal (mm)	Opening time (sec.)	Closing time (sec.)
10	<1,0	<1,0
15	<1,0	<1,0
20	<1,0	<1,0
25	<1,0	<1,0
32	<1,0	<1,0
40	<1,0	<1,0
50	<1,0	<1,0
65	1,0	<1,0
80	1,7	1,0
100	2,2	1,8
125	4,0	2,5
150	7,0	4,0
200	13,0	9,0
250	25,0	16,0

Os dados baseiam-se no seguinte:

- Junta: borracha natural (tipo: 03X)
- Pressão de comando: 2,5bar / Pressão de serviço: 0bar (Atmosfera)
- Válvula piloto: DN 9mm / G1/4" (montada directamente)

The details are based on the following:

- Sleeve: Natural rubber (type: 03X)
- Control pressure: 2,5bar / Operation pressure: 0bar (Atm.)
- Solenoid Valve: DN 9mm / G1/4" (directly mounted)

Os tempos de abertura e de fecho podem oscilar e dependem da:

- Pressão de serviço na junta
- Qualidade da borracha na junta
- Caudal de ar dos órgãos de comando
- Temperatura
- Frequência cíclica (abrir/fechar)
- Comprimento da linha de comando

The opening and closing times may vary. These times depend on:

- Operation pressure inside the sleeve
- Material of the sleeve
- Airflow capacity of control device
- Temperature
- Number of cycles (open/close)
- Length of control line

Reservado o direito a alterações técnicas.

Technical changes kept in reserve.

AKO Armaturen & Separations GmbH

D-65468 Trebur-Astheim • Adam-Opel-Str. 5 • Telefone: +49 (0) 61 47-9159-0 • Fax: +49 (0) 61 47-9159-59

E-Mail: ako@ako-armaturen.de • Internet: www.valvulas-de-mangote.com.pt